

SOUTH ISLAND FORMULA FORD



COMMITTEE : A.Robertson, M Elder, R.Toshach, M.Smit, S.Spencer-Bower, R.Low, D.Christensen, G.Love, L. Low, N.Barclay, D.Wilson, I.McKeown (Technical subcommittee) Gill Cox (Historic subcommittee)

January 2022

Hi Everyone and welcome to the first newsletter for 2022. Not much happening overseas at the moment although Formula E kicked off their season in Saudi Arabia at Diriyah on a street circuit. Nick Cassidy and Mitch Evens started with Mitch bringing the Jaguar home in tenth in what looked to be a very big field. The race was a Mercedes one two with Dutch driver Nyck de Vries ahead of Belgian Stoffel Vandoorne. The E cars handle their fair share of contact which is just as well because there is plenty of it on the tighter street circuits that they race on. Personally I would like to see them on proper race tracks rather than the somewhat stop-start street format.



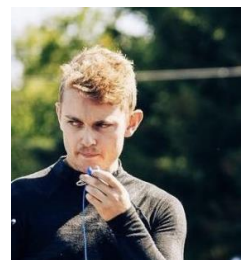
Good to see Liam Lawson at our recent Ruapuna meeting. Liam's holiday job seems to be to smash lap records in the very long wheelbase Rodin FZED, achieving that at both Highlands and Ruapuna. Clearly having 675hp helps, and the David Dicker inspired commercially available F1 car equivalent is an impressive bit of kit



Most of you will know that the GP has been cancelled for '22. New Zealand is incredibly fortunate to have Toyota invest so much into a premier single seater series, but the reality is that it cannot be sustained by only domestic support. In short, well funded overseas drivers help to pay the bills, and at the moment it just isn't on for them to come. The biggest casualty has to be James Penrose. The fully funded Castrol FT60 drive was the perfect opportunity for James to showcase his talents, and now it is not happening. Real shame.



Caught up with Jacob Douglas (left) and Ryan Yardley (right) at Ruapuna recently. Both young guys are working hard to carve out a career in the US; Jacob in the Pro 2000 class; Ryan in the US F3 series. I've long held the view that the US offers more affordable opportunities for our drivers and with Hunter McElrea, Billy Frazer, Ryan and Jacob all knocking on the door, NZ is well represented.



SOUTH ISLAND FORMULA FORD



We had round four of our SIF1600 series at Ruapuna on the 21st 22nd and 23rd. An eventual 29 entries for the Speedworks round was acceptable, and the grid was swelled by the appearance of six NI teams who can at long last travel outside the Auckland area. Again some great racing. I received many comments from people about how close it all was, and the best example was Matt Hamilton's winning margin in race three of .004 of a second in front of Louis Sharp. Zac Christensen picked up his second win of the series when he won race one, with Louis Sharp winning races two and four, and Matt Hamilton a wet race three. There was some very tight racing for the minor placings as well, all of which was highly entertaining. I'm sure the times are getting faster. Louis qualified with a 1.29.9, and over the meeting a further eleven drivers were in the 1.30s, and another eight in the 1.31s. The cars looked impressive in the wet race too, with drivers commenting on how good the tyres were. One of the pieces of feedback we received from Australia was that the Yokos closed the field up, and that certainly seems to be the case.

I had the job of observing track limit compliance (or not) at turn three which is just before pothole. Standing on the bank in my SIF1600 shirt holding a radio transmitter, I felt very much like the policeman parked on the side of the road. Had a similar effect too. Behaviour was quite good, although I did radio in a couple of numbers. I did have to quickly learn to only watch about ten metres of white line, and then only the car's left front wheel, and the hardest of the lot, don't talk to spectators! Quite demanding really.

We had another couple of firsts for the meeting. We measured rollhoop to helmet clearance with the 50mm minimum being non-negotiable. This is very much a consequence of the Health and Safety liability issue that we are now aware of. A quick check showed eight cars that needed a recheck. Thankfully six managed to sculpt the seats or make other arrangements. However two had to have a quick visit to Motorsport Solutions to rectify matters.

The other new check was overall width.....1850mm. One was touch and go, and another was touch and wouldn't go. A good piece of advice here is, if the car has spacers, skim a little off them. Much better than resetting the rod ends.

And as a follow-on to the rollhoop check in particular, we will ask that they become part of the scrutineer's post race checking procedure. These will be done with the car/driver combo "as raced".

Another clarification we are seeking is how the race finish is determined. At Ruapuna it is when the transponder crosses the line, but the transponder isn't mounted on the most forward part of the car, and I would have thought it would be that part of the car that determined the finishing order. At Ruapuna the observers thought that Louis Sharp in the long nosed Spectrum, beat Matt across the line. The VD'88s nose is shorter, but the '88s transponder was .004sec ahead, and that was ultimately the result.



Below Leo Scott and Kyan Davie



The NIFF chairman (above) perilously close to exceeding track limits, BUT look at that roll hoop !



SOUTH ISLAND FORMULA FORD



Zac Christensen



Paul Kinsman presenting Bree Morris with 'Driver of the Meeting'



Cameron Freeman



Jake Bryant...First meeting in a real race car



Sebastian Manson with the Master Mind



Bo Hill



Matt Hamilton

Louis Sharp





SOUTH ISLAND HISTORIC FORMULA FORD

Will we ; Won't we - yes we will!

At the date of penning this brief report with regard to the Historic Formula Ford class in the South Island, Round 3 of the four round 2021/22 Series is set to go ahead as part of the Classic Motor Racing Club Levels (Timaru) meeting 11-13 February 2022.

Round 3 will consist of 4 x 8 lap races of the Levels track (making up for a race "lost" due to wet conditions in the late November round at Ruapuna). Covid restrictions willing the Class will see between 15 and 17 cars on the grid. Two things are driving this increase in grid size - increased interest in the Class from existing and "new entrant" Formula Ford divers in the South Island; and a contingent of North Island Historic FF drivers bringing their cars to the South Island for the Classic motor racing series Round 4 of the 2021/22 Series will follow at Teretonga on 19-20 March 2022.

The attention of the sub committee will then turn to the 2022/23 Historic Series. Current indications are that there will be a strong entry of cars for this Series with a number of cars (and perhaps drivers!) that have been "in retirement" now being rumoured to be "in preparation".

It is hoped that we may consistently see mid teen numbers on the grid for each round of what will continue as a four round series. So... if you are thinking about it, now is the time to get in touch for a chat. Contact Derek Wilson (0275 001735) or Gill Cox (021 873611)."

Kind regards

Gill



And to add to Gill's comments about numbers, the Phil Reed Bowin has been sold as has the Johnston. Both are staying down here. There are also another couple of cars that will be part of next year's field that haven't been seen in this year's series. In fact I've received a scoop undercover photo of one. I'm sure the more astute amongst you will tell from the shape what it is.

Roll on next year !

A very small number of you will be interested to know that I've had a go at mountain climbing. Yes I tried to renew my competition licence using MSNZ's on-line Possum system. I will admit to being complacent. I renewed the licence last year and assumed that if I used the same User name and password that worked last year (I had recorded them), all would be fine this year. Well silly old me. Possum simply told me that one or the other wasn't right and to try again. So I did; many times, using lots of variations. Nothing. I devised a cunning plan. I would apply for a brand spanker. That didn't turn out so well either. Possum would only give me a C1, not a C2. Now I've only had a competition licence for twelve years and I am a slow learner, but this was a bridge too far. I rang Morgan at Motorsport who sent me two lots of Egyptian hieroglyphics that she assured me would do the trick. Not a chance, but Possum did encourage me to try again ! I had to resort to Plan C. Both our daughters are very computer savvy. I would rope in one of them.



SOUTH ISLAND FORMULA FORD

Unfortunately, what always worked in the past failed this time. All I achieved was to turn a perfectly pleasant young lady into someone whose frame of mind was incendiary to put it mildly. I was told to ring MSNZ, again. Just to keep the peace I did (Plan D) and this is where it gets better. I struck the marvellous wonderful Raewyn. I explained my dilemma. All I wanted was a C2 licence. Do they issue them to people on the verge of a nervous breakdown ? She hit upon a solution immediately. Could she send me a form? Could be a bit radical but why not? It was in my inbox in about ten minutes. I had it downloaded, filled in and scanned in about fifteen minutes and the money paid five minutes later. Too easy. Now I happen to know that MSNZ is looking to replace Possum and will consider constructive suggestions. Well here goes. First hire a helicopter and fill it with everything in the office associated with Possum. Fly to the Chathams. At the halfway point open the door and empty the helicopter. A replacement system ? Well it will probably cost \$250,000, last ten years, drive us mad for the last eight and be worthless at the end. There is another way. We could pay Saint Raewyn \$25,000 a year extra for ten years. She could send out forms and I/we could live happily ever after. Genius

CHAIRMAN'S CORNER

Hi Racers



Well what a great meeting at Ruapuna. Close fast racing, a great show for the crowd and a bonus, it was live streamed. If you missed it look up our facebook page or Speedworks Events website.

Motorsport New Zealand are determined that events will continue this season and our Timaru round on the 5th/3 is still on to date. It would be really good to know who intends to compete at Timaru and at our last round in Teretonga. As Omicron continues to spread throughout the country the committee will need to make a call on if the final two rounds will be held and I suspect this decision make be taken out of our hands. In the meantime if we know the competitor numbers it will help us make plans going forward.

We are still planning as the National series will go ahead and again competitor numbers will assist us moving forward. Please let us know.

The Hampton Downs Academy travel fund will be available for all those who compete at both Super rounds. A minimum of \$1000.00 per competitor will be available. I would suggest making ferry bookings now and take out cancellation insurance in case we are forced to cancel.

Look out for a Email from Derek regarding attending and please let us know ASAP

Well back to the
shed
Andy

And that's it from me too, so as always,
Stay Lucky
Derek



TECH CHECK

CAST HEADS : The maximum size for the exhaust ports for these heads is 29.5mm. Over time these ports can erode to in excess of 29.5mm. If you have an old cast head, check the exhaust port size.

VD REAR HUB BOLTS : Probably not the right title, but the big cap screws that hold the rear hubs on the 90-92 VD's can break. These need to be replaced regularly.

VD 92 : The pins at the inboard end of the front pushrods on the 92s need to be crack tested regularly, as do the top outer vertical pins on all the uprights.

FIRE EXTINGUISHER GAUGES AND TAGS :

It will be a requirement that these must be able to be read unobstructed by covers etc. For the pit extinguisher, it is a good idea to remove the Zip tie and R-clip out of the handle while the extinguisher is in the pits so the extinguisher is "at the ready".



RAIN LIGHTS : These must be mounted as close to the car's centre line as possible, and facing rearwards. There is no height requirement but some could certainly be mounted higher and unobstructed by rear anti-roll bar levers.

BRAKE CALIPERS AND PISTONS : Have you checked yours with a magnet ? They must be a ferrous material.

ROLLOVER BAR HEIGHT : The diagram says it all. The exceptions are class 3 cars that don't have a front roll hoop. They are measured to a forward substantial structure. The clearance is the same. If you are measured and found to be under 50mm, you will not race until the problem is fixed

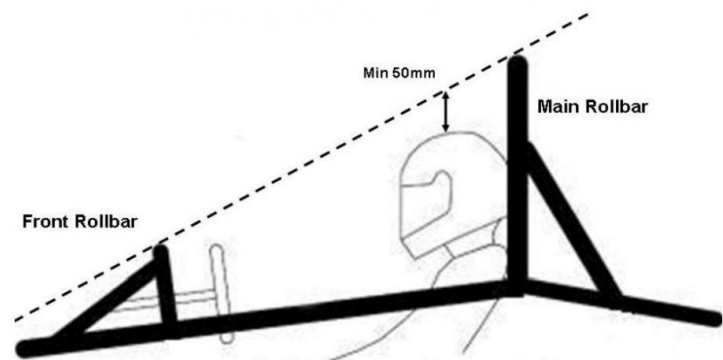
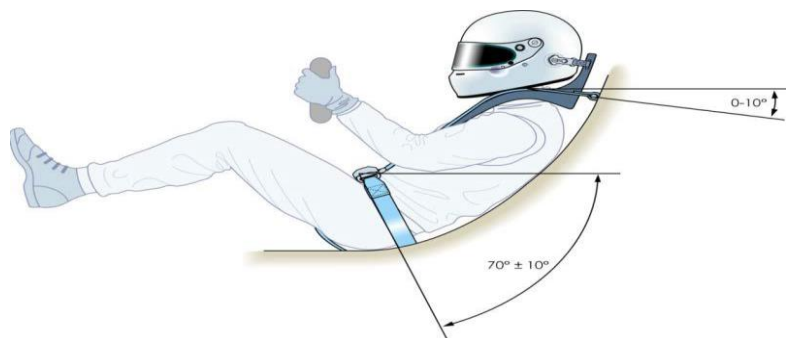


Diagram 5.1 - Open Vehicle Main Rollbar Height

SHOCK ABSORBERS : It will be a requirement for the '21-'22 season and beyond, for all dampers to have two only external adjusters.

Three-ways may be modified so they comply. For further advice contact Peter McCallum for Penskes 0274 410 204 or Robert Taylor for Ohlins 021 825 514

SEAT BELTS : Are yours OK for age and height. We have, under Schedule Z, a +5yr extension to the expiry date. Safety harness shoulder straps should be installed at 0 degrees to the horizontal with angles between 0 and 10 degrees being acceptable.



SOUTH ISLAND FORMULA FORD



DIFF CARRIER : Crack test, especially if it has had the die grinder at it. Shimmed up spider gears need a second thought as well.

REVOLUTION WHEELS : These can crack where the spokes join the rim.

SCAT RODS : Make sure these comply with Schedule F, Article 15, especially the 640g weight.



GEAR RATIOS : The chart could be used as a guideline for the Yokohamas

	Ruapuna 10.31	Levels 10.31	Ruapuna 9.31	Levels 9.31
1 st	15/36	15/36	15/36	15/36
2 nd	17/28	16/30	16/24	19/33
3 rd	20/27	17/25	23/28	19/25
4 th	24/27 or 19/21.	21/24	23/24	23/24

Info

RACE NUMBERS : Numbers are issued to drivers, not cars. The exceptions are the SIFF scholarship cars, and the NIFF HAG car, simply because of the “rental” nature of the respective arrangements. Double –ups are avoided. If you need a number, the Numbers Register is managed by Derek Wilson adw0398@yahoo.co.nz

SIM RACING : Keen to have a go ?? Contact siffsimracing@gmail.com for advice and information, or go to Facebook <https://www.facebook.com/Sif1600SimRacing>.

APPAREL : We are taking orders for a second run for “Jagger” dress shirts contact Simon Spencer-Bower simon@wanakahelicopters.co.nz or Derek: adw0398@yahoo.co.nz

CALENDAR :		SIF1600	
SI Historic FF			
Ruapuna Wigram	29,30 & 31/10/21	Ruapuna	17/10/21
Levels	6/11/21		Teretonga 4
& 5/12/21		Ruapuna	28/11/21
Speedworks	21,22,23/1/22 Ruapuna	Levels Classic	12 & 13/2/22
Levels	5/3/22		Teretonga 19
&20/3/22		Teretonga	19 &20/3/22
Ruapuna	1/5/22 National Championship Super Round (TBC)		

TRANSPONDERS : We have a transponder for race weekend lease or possibly sale. Contact Andy 021 305 550, jap4x4parts@gmail.com or Derek 0275 001 735, adw0398@yahoo.co.nz

HELPERS : We have members who could do with a hand on race weekends. If you enjoy motor racing and fancy being involved with the cars and drivers, let me or Andy know. Derek :- adw0398@yahoo.co.nz
or Andy:- jap4x4parts@gmail.co.nz

MEMBERSHIP : These are due from the 1/7/21.

A full membership (\$210) entitles the member to compete in the entire SIF1600 / SIHFF series.

SOUTH ISLAND FORMULA FORD



A social membership (\$55) entitles a member to compete in one race meeting only.

The membership forms are available from Janine Yardley (SIFF Treasurer) treasurer@siff.co.nz

YOKOHAMAS: Email southislanddirect@gmail.com for the form as shown on the last page. Delivery will be made on receipt of payment.

SOUTH ISLAND FORMULA FORD CLUB HISTORIC SUB-COMMITTEE : Gill Cox (chairman) Steve Foster, Mark Hamilton, Hayden Cox, Nigel Barclay, Andy Robertson, Derek Wilson

CLASSIFIEDS

VAN DIEMEN STEALTH

New belts, new nose cone, 2 spare radiators, 3 sets rims
Ratios for all tracks except Hampton Downs
Unused spare suspension arms, comprehensive spares
Rebuilt Ohlins 2-way (front) , \$1721, invoice provided
Ohlins on the rear. Car is race ready
Contact Kerry Ross 021 605 360



VAN DIEMEN RF83

Spares include nosecone, brake and engine parts,
suspension, quick lift jack, spare set of wheels
Tidy and reliable

\$23,000

Contact : Nigel Barclay 021 490 907
email nigel@pennyhomes.co.nz



VAN DIEMEN RF91

A front to back eighteen month restoration
Beautifully finished. A must see.

New Yokohamas

\$ 36,000

Contact John Sloane 0274 519 994



SOUTH ISLAND FORMULA FORD



RAY GR21 Motorsport Solutions has secured an arrangement to import new GR21 Rays in kitset form, and is seeking expressions of interest. The kits are imported minus the motor, and are VERY attractively priced. Spares availability has also been arranged, again at attractive prices. Lead-in times of 16 weeks can be expected; order asap for on time delivery .



ARRIVING NOW !! On the way from Auckland 1 x GR21 new in kitset form plus 1 x GR18 updated to '21 specs, complete car. Five races only in the UK .

Contact : John Crawford at Motorsport Solutions

Ph 03 349 3600

TrackTec Racing accelerate to the podium program has a Ray GR20 available for racing and testing , testing on the new tyre will start as soon as we get the Yokohama tyres into New Zealand ,exciting times for all as the playing field will levelled out with the introduction of these tyres

For further info contact

matt.tracktecracing@gmail.com



MYGALE SJ07

Podium winning car, as raced by Kaleb Ngatua New Hartley engine Lots of spares, eg. wishbones, shock springs, full gear sets wheels and tyres, nose cone, side pods. Please call for full list \$55, 0000 including all spares, ready to race Gantry and stands at additional cost



Contact Robbie on 021 163 6399

SWIFT SC94

Swift Works SC94 ex Simon Wills (Aztec Racing)
Engine has two meetings on a refresh.
New alloy head from Motorsport Solutions
New carb and air filter, Scorcher dizzy, New radiators,
Full suspension spares and uprights, camber shims etc,
New rotors, box of ratios. Sway bars
Front and rear suspension pushrods.
New crash box and nose cone, Jump battery plus more.
Three sets of rims. One set of Yokohamas 2 meetings old.
\$31,500 Ready to race. Ph Andy 021 305 550



SOUTH ISLAND FORMULA FORD



VAN DIEMEN '91, '92 SIDE WINDOWS.
prevent cracking. Some finishing will be required to suit individual cars. Good luck finding these anywhere else. One order already from the UK.
\$130 / pair incl GST plus postage
Email : sloanedogon@xtra.co.nz

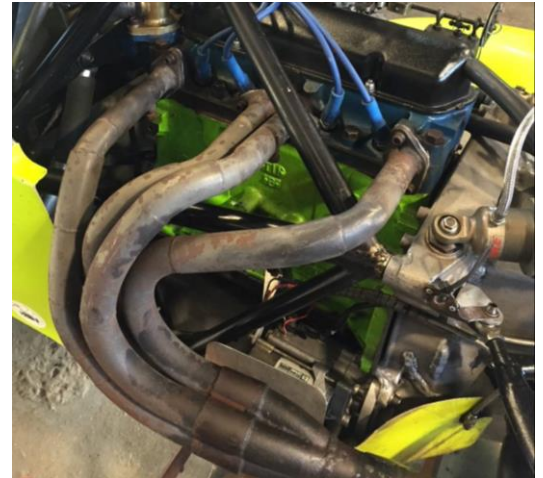
Hardened Acrylic and supplied with plastic pop rivets to
Contact: John Sloane 0274 519 994

LOW PIPE 4 into 1 exhaust system to suit '90 – 92 VD

Available ex Christchurch

\$200

Contact Shane 0274 739 406
Email ceo@cichane.co.nz



Chicane Racewear are now the NZ distributor for the high quality Radial rod ends and spherical bearings. Previously distributed by BRM Trading, the USA made rod ends start with the chrome moly high strength precision series then move to the stainless steel high strength aerospace series, both with heavy duty shank options.

Contact us now on 0800 CHICANE or go to www.racerodends.com for more info



HEWLAND LD200

STANDARD DIFF CARRIER (dished)

The only one left

\$870 + GST invoice provided

Contact Kim Crocker 0274 788 026

Email kim.crocker@xtra.co.nz





Radar's Motorsport



Performance Engine Builder



For all of your engine requirements including carburettor and distributor repairs



House calls also available for any of those car issues that you just need a little help with

I am always available to help by phone /text or email

30 years' experience in performance engine building

20 years' experience in Formula ford

Ian Mckeown

021 641 681 ijmck@orcon.net.nz

HEWLAND MK9 Gear ratios : I am looking for the following gear ratios to purchase or swap. I have some double ups

15-36 (First, either hubbed or non-hubbed)

17-33

19-33

21-29

CONTACT Grant Campbell 021 637 610 or grant_a@hotmail.co.nz

CAR STARTING TO JUMP OUT OF GEAR? Rebuilding those worn dog rings and gears is a very economical option to buying new.

Further enquiries to Justin Neill Engineering

Ph 03 323 9900 Mob 027 228 0050

Email justinneill@xtra.co.nz

10 Langston Lane, Papanui, Christchurch



SOUTH ISLAND FORMULA FORD



SEAT MOLD to suit Van Diemen RF90-92. Anyone wanting to make their own seat is welcome to borrow this mold. ALSO if anyone has any internals for a Mk5 Hewland, John Sloane would be very interested. Contact him on 0274 519 994



AVAILABLE from MOTORSPORT SOLUTIONS

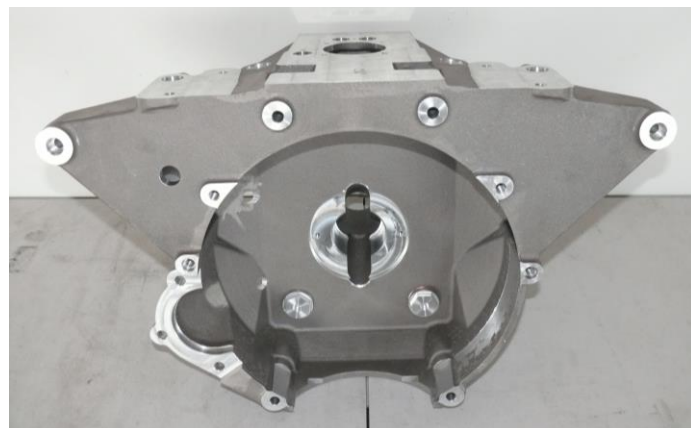


Ivey Valves Formula Ford -
Intake \$29 + GST
Exhaust \$39 + GST

Rebel rims in stock
\$425 + GST



Lola 644 front uprights LH & RH
\$850 + GST ea.



Stealth bellhousing suits both SWB, LWB. POA

Keep up to date on our latest products, visit – www.motorsportsolutions.co.nz

Email: motorsportsolutions@xtra.co.nz

Phone: 03 349 3600



SOUTH ISLAND FORMULA FORD



Small carbon-look mirrors, **\$89.10**, as per [https://www.classiccaraccessories.co.nz/collections/mirrors/products/carbon-look-racing-](https://www.classiccaraccessories.co.nz/collections/mirrors/products/carbon-look-racing-mirrors)

[mirrors](https://www.classiccaraccessories.co.nz/collections/mirrors/products/carbon-look-racing-mirrors) – Small black mirrors, **\$76.50** as per [https://www.classiccaraccessories.co.nz/collections/mirrors/products/black-lightweight-racing-](https://www.classiccaraccessories.co.nz/collections/mirrors/products/black-lightweight-racing-mirrors)

[mirrors](https://www.classiccaraccessories.co.nz/collections/mirrors/products/black-lightweight-racing-mirrors)
- Small carbon mirrors, **\$202.50** as per [https://www.classiccaraccessories.co.nz/collections/mirrors/products/carbon-fibre-](https://www.classiccaraccessories.co.nz/collections/mirrors/products/carbon-fibre-racing-mirrors)

[racing-mirrors](https://www.classiccaraccessories.co.nz/collections/mirrors/products/carbon-fibre-racing-mirrors) Discount prices for SIFF members For the discounted price please use the following link: www.classiccaraccessories.co.nz/formulaford



.A piece of advice from Malcolm Yardley. On these distributors the cover over the module can short out. Insulation should be fitted in the side cover. The terminals should also be insulated and possibly bent over.

further advice phone Malcolm 0274 315 170



For

100mm x 100mm 12 volt 36 LED Rain Light. Exactly the same as fitted to Andy Downs' car. Very good lights that easily exceed MSNZ requirements, and look at the price.....\$61.00 incl



Phone Hornby Auto Electrical : 03 344 0170 or Malcolm : 0274 315 170

STEALTH NOSECONE .

The pointy version as developed by the Leitches and used by James Penrose to win the SIF1600 and National Championships . The margin on sales goes to the SIFF club.

\$170.00 each

Contact Andy Robertson : 021 305 550



SOUTH ISLAND FORMULA FORD



Latest arriving, 2021 Formula Harness with either pull up or pull down side straps, quick release adjuster only available in Black \$345 plus gst



SC

WWW.PALMSIDE.CO.NZ

4 Islington Avenue Christchurch 8042 phone 03 338 9151



SOUTH ISLAND FORMULA FORD



UK REVOLUTION RACE WHEELS

2 sets as used on the ex Noble-Adams VD90

Very good condition

\$600 per set

Contact Nigel Arkell 029 993 3007

narkell@mac.com



Van Diemen 90-92 Parts For Sale

Top Front Wishbones x2 Standard Suspension NEW - \$250 Each

Right Front Lower Wishbone Standard Suspension NEW - \$290

Rear Top Wishbone NEW - \$280

1 Pair Springs 8inch x 150lbs (UK) NEW - \$180

1 Pair Springs 8inch x 160lbs (UK) NEW - \$180

2x Radiator Cores NEW \$300



Gear Ratios/Parts For Sale

- Hewland Mk 8/9 Gear Ratios 20:32 NEW \$450
- Hewland Mk 8/9 Gear Ratios 20:31 NEW \$450
- Input Shaft For 8" Clutch (Hewland HC23917) NEW \$450

Gear Ratios/Parts For Sale

- LD200 20:32 NEW \$450
- LD200 21:27 NEW \$450
- LD200 21:26 AS NEW \$400
- LD200 19:25 AS NEW \$400
- LD200 24:28 AS NEW \$400
- LD200 First Gear and Shaft 14:36 VERY GOOD CONDITION \$750



Cortina 1600GT 2737E head. New valve guides \$300

FOR ALL OF THE ABOVE Contact Bob 0210 236 5086

email: greenpear225@gmail.com

please note OTHER PARTS ALSO AVAILABLE



SOUTH ISLAND FORMULA FORD



QA1 DAMPERS

Rear eye to eye 270mm
Front eye to eye 255mm
Will fit Ray
One way adjustment
Alloy body
Dyno sheet to go with dampers

\$1000 for the set

Contact Ryan 0273 600 218

Email info@ryanselectrical.co.nz



HEAD

Cast Steel Formula Ford head
Complete with valves, rockers etc
as shown.
Being replaced with an alloy head.

\$2700

Contact Gary Love
0274 077 879



WELLER STEEL WHEELS

A total of 18

Ryan Low = 12

Gary Love = 6

Offset +10

PCD 95.25

\$100 each

Contact Ryan 0273 600 218

email info@ryanselectrical.co.nz



SOUTH ISLAND FORMULA FORD

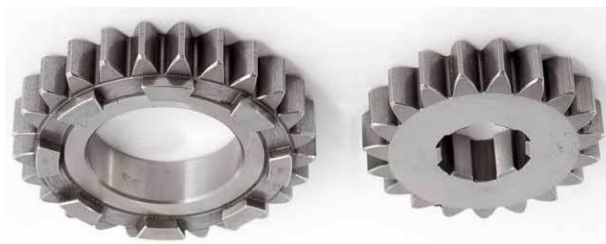


Brand new Cambridge Dynamics LD200 gear ratios as listed below. Be quick at this awesome price, \$345 each incl GST plus freight ex Auckland.

Contact Shane @ Chicane Racewear on 0800 CHICANE or ceo@chicane.co.nz

RATIO TEETH Stock

- 2.5714 14X36 1
- 1.9375 16X31 1
- 2.1250 16X34 3
- 2.1875 16X35 1
- 1.8130 16X29 1
- 1.5550 18X28 2
- 1.7780 18X32 1
- 1.8880 18X34 1
- 1.2630 19X24 1
- 1.4210 19X27 4
- 1.5500 20X31 4
- 1.2380 21X26 3
- 1.2730 22X28 1
- 1.2170 23X28 1
- 1.2600 23X29 4
- 1.0000 24X24 2



VELOCITY HQ RACE CAR TRAILERS

Tilt bed, unladen weight = 980kg, gross = 3000kg
internal length 4.86m, width at wheel arch 2.09m, height 1.83m
Many other options including a 2 car system that works particularly well for F1600s

<https://www.trademe.co.nz/a/motors/trailers/tandem-axle/listing/3027769951?bof=WzVagbH9>

Link to Two car system option

<https://www.facebook.com/watch/?v=849668015419795>

\$29,999

Contact Adam Julian 021 304 001

decracing@outlook.com



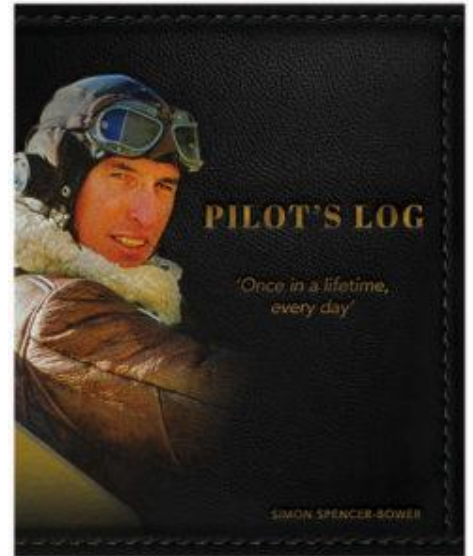
PILOT'S LOG

From farm boy to one of the world's top helicopter instructors, an aviation pictorial journey of history and stories.

A pictorial iconography written with a focus on aviation but referencing my agricultural roots and the remarkable achievements of my intellectual, innovative and pioneering ancestors.

This is a 450 page, 340 Images and 60,000 word pictorial book.

\$98.00. Available in bookstores or online (search Pilot's Log ; Simon Spencer-Bower)



NON-RETURN VALVES. These are a mandatory safety item to be fitted to the breather from the fuel tank.

Proceeds go to the SIFF club. \$20.00 ea
Contact Andy Robertson : 021 305 550



Virtual Race Training



CARLYLE
PERFORMANCE LIMITED

ACTUAL RESULTS

MOTIONFORCE1
PERFORMANCE SIMULATIONS

 Carlyle-Performance-Ltd
0292 632223



Tyre Order and Costs

Name _____

Contact Phone Number _____

Tyre Order (please tick) One Set \$ 989.00 Two Sets \$1978.00 One Tyre Only \$247.25

Note – maximum initial order limited to two sets of tyres

Delivery Address _____

Note – delivery can only be made to a commercial address

Tyre Payment Method – Online Only

1. Please scan or take a digital image of completed forms Send to southislanddirect@gmail.com
2. Use your name and type "Tyres" as references A/C No **03 0830 0098465 000**

Please note – this bank account differs from the account used for membership payments