

SOUTH ISLAND FORMULA FORD



COMMITTEE : A.Robertson, M Elder, R.Toshach, M.Smit, S.Spencer-Bower, R.Low, D.Christensen, G.Love, L. Low ,N.Barclay, D.Wilson, I.McKeown (Technical subcommittee) Gill Cox (Historic subcommittee)

December 2021

Hi Everyone and welcome to the first of hopefully two December newsletters, this one following the Historic meeting last weekend at Ruapuna, whilst the the second will be after the SIF1600 Teretonga meeting this coming weekend.



Offshore there has been some great racing and a couple of Kiwis have excelled. Shane Van Gisbergen has been the Supercars form horse all season, in a league of his own really. Thoroughly



professional, overcoming a broken collar bone, and some stellar drives capturing fourteen wins and twenty-three podiums from twenty-nine races culminating in the '21 Supercars title, the now two time champ these days sets the standard in the world's best tin top series. Doesn't get much better for the 32 year old, and with fifty four wins to his credit and at least ten years left if he chooses to stay in Supercars, the impressive record of his retiring team mate Jamie Whincup, with seven titles and one hundred and twenty four wins could easily come under threat.

In Formula 1, Sir Lewis Hamilton scored GP win number one hundred and two, to narrow the gap to points leader Max Verstappen to eight, and in the process changed what not so long ago looked like a forgone conclusion in MV's favour into something of a cliffhanger. I take my hat off to the seven time world champion who simply refuses to give up, and he may well defy the odds and claim an eighth world title. Two GPs to go ; fascinating. It is interesting to compare the approaches of Hamilton and SVG to life as it relates to their success. Shane is very happy to be a race driver, end of story. A race car is his happy place and he has little inclination to leverage his success beyond that. Hamilton is the exact opposite. He leverages his profile to highlight issues not specifically related to motor racing; the Black Lives Matter movement in particular. Works too. Time magazine listed him amongst the top one hundred most influential people in the world. Quite amazing when you think about it.



SOUTH ISLAND FORMULA FORD



The other Kiwi that the news is all good for is Hunter McElrea in the US. One of the fastest in the Pro 2000 series, things didn't go well for Hunter mid season. Thankfully the series of misfortunes that dogged him didn't continue in the closing stages and some fine drives saw him finish a creditable third in the series, and the photo on the left shows a very snappy looking Hunter at the awards occasion. Of greater significance though is the signing with Andretti Motorsport for the Indy Lights series in the car on the right. To be a part of one of the high profile IndyCar teams in what is for many is the feeder series to the main game is a recognition of the potential Andretti see in Hunter. What a fantastic opportunity and we wish him all the best.



Last Sunday saw the second round of the South Island Historic Formula Ford series at Ruapuna. Being a broad-minded Cantabrian, I would like to say that the meeting was held in fine sunny



conditions with the occasional puff of nor'west wind. Alas not the case. The day varied between heavy drizzle and light(ish) rain, which made for greasy conditions at best. We had eight competitors for the Historic series, but the races were programmed, at the request of the Canterbury Car Club as libre races, to provide the occasional racers with a practise meeting prior to Skope. Well on this occasional, they probably wisely

stayed away, but the field was swelled by a further four SIF1600 cars, and looked respectable. The 1600s started off the front of the grid with the Historics behind. Steve Heffernan (right) and Nigel Barclay (above) were welcome new entrants to the series. Gill Cox has the following comments.



SOUTH ISLAND HISTORIC FORMULA FORD SUB COMMITTEE

"A Slippery Slidey Round 2"

Round 2 of the SIHFF 2021/22 Series was run at Ruapuna on Sunday 28 November 2021 as part of the Canterbury Car Club Mag and Turbo club day.

The day was a great success with eight cars on the track in the Class – understandably a little reduced from the number expected because of the shocking weather that Canterbury turned in for the day.

As expected, lap times were very slow throughout the day, although I think all drivers found the day a test of their limits and abilities. One or two very minor excursions on to the wet green stuff, but no majors.



SOUTH ISLAND FORMULA FORD

At the end of the day (limited to two races due to time constraints and in the end the meeting being “called”) the Round 2 winner was Andy Downs (two from two!), with Graham Dickie second, and with a couple of superb drives – Duncan Wright in the Johnston third overall.

All drivers should be proud – not only of their fortitude, but also of the respect they showed to each other while being competitive throughout the day in really trying conditions.

We now look forward to the next two rounds – Levels on 11-13 February 2022 (as part of the CMRC meeting); and Teretonga 19-20 March 2022 (where we join up with our more modern brothers SIFF 1600). It’s hard to believe our inaugural Series is now at its halfway point!

There are strong indications of a growing interest in the Class, and with only a few eligible cars out there for sale, it may be a case of getting in quickly if you want to be part of what is proving to be an enjoyable, competitive, but respectful group of racers.

If you have an interest in joining the Class please give Derek Wilson (0275 001735); Andy Robertson (021 305550); or Gill Cox 9 021 873611) a call to have a chat.

Finally – our thanks to Mark , Chris and the team at the Canterbury Car Club for hosting Round 2 of our Series – and the help that they all gave to make the day so successful.

The Series points at the end of Round 2 are as follows- Andy Downs 377, Graham Dickie 322, Hayden Cox 283, Duncan Wright 282, Mark Hamilton 225.

Talking about the 1600 series cars that competed on Sunday, three of the four were newbies to our series. Will Kitching and Harry McDonald drove Gary Love’s VD98 and VD88 respectively, with Harry winning the first race. Blake Knowles had a run in their newly acquired ‘05VD (left) and won the second race. All three drove well in the tricky conditions and will be part of the Teretonga field this Sunday. At this stage the grid for that meeting should be about twenty five, and in the present Covid- influenced, vaccine passport mandated environment that we live in, that is about as good as it gets.



Chairman's Corner



As it happens, Andy has run out of hours in the day to write his article, so I'm filling in and I reckon he would say this :

Hi Race fans,

Many of you will know by now that NIFF and SIFF have cancelled the National Championship January round that was to be held at the Speedworks meeting at Highlands. The reason is that the North Island Covid restrictions have eliminated race opportunities for the North Island competitors to the extent that the Highlands round would have been their first race meeting. In comparison our South Island participants would have had three SIF1600 rounds, plus any club days, so at least nine races plus practise and qualifying, and in comparison would have been right on the pace. At this stage it is likely that the South Island National Championship Super Round will now become the second round after Taupo on the 26th and 27th of March. At this stage the most likely date for the South Island Super Round will be the Ruapuna meeting on May 1, but that is provisional at the moment. Another consequence of the withdrawal from Highlands is an invitation from Karen Paddon to compete at the Levels truck meeting one week after the Speedworks SIF1600 round at Ruapuna. The Ruapuna round is on the 21,22 & 23rd 1/22. Levels would be the 29-30/1/22. This is a meeting that's draws an excellent crowd (6-8,000), but we can only promote it as a "fun" day and not at this late stage, part of our championship. It would work well for any North Islanders who came down for the Ruapuna round. We can't commit to being part of the programme until we are sure of a decent field. Twenty is the target, so if you are keen, email the Co-ordinator, Derek at adw0398@yahoo.co.nz asap please.

You may recall in an earlier article that in announcing my intention to compete in this year's SIF1600 series, I assured my fellow competitors that I would de-tune the Swift, so as not to embarrass them. Well I'm a man of my word, and at the Ruapuna meeting, enjoyed keeping a fatherly eye on the field from an advantageous position. I've also entered Teretonga, (I'll be the one in the flash overalls), so remember, you are being watched !

That's it, so.....

Back to the shed for me

Andy



SOUTH ISLAND FORMULA FORD



Isn't this a nice bit of kit ?? Jason Crosbie has been busy for the last year or so building up this Ford to compliment their Van Diemen RF92 and Ray GR21 in the shed. The Mustang was originally a road car that literally fell off the back of a truck whilst being delivered to the dealer ! Some legacy issues were found at the same time and in total, the damage was sufficient to write it off as a road car, but

presented the perfect opportunity to build a super race car. The original motor has been replaced with a 5.2 Voodoo unit, and a new gearbox installed for good measure. Jason's partner, Rachael Beck is going to step out of her fearsome 850 Fiat into the Mustang. Good work !!

And on that happy note,

Stay Lucky,

Derek.

TECH CHECK

CAST HEADS : The maximum size for the exhaust ports for these heads is 29.5mm. Over time these ports can erode to in excess of 29.5mm. If you have an old cast head, check the exhaust port size.

VD REAR HUB BOLTS : Probably not the right title, but the big cap screws that hold the rear hubs on the 90-92 VDs can break. These need to be replaced regularly.

VD 92 : The pins at the inboard end of the front pushrods on the 92s need to be crack tested regularly, as do the top outer vertical pins on all the uprights.



FIRE EXTINGUISHER GAUGES AND TAGS :

It will be a requirement that these must be able to be read unobstructed by covers etc. For the pit extinguisher, it is a good idea to remove the Zip tie and R-clip out of the handle while the extinguisher is in the pits so the extinguisher is "at the ready".

RAIN LIGHTS : These must be mounted as close to the car's centre line as possible, and facing rearwards. There is no height requirement but some could certainly be mounted higher and unobstructed by rear anti-roll bar levers.

BRAKE CALIPERS AND PISTONS : Have you checked yours with a magnet ? They must be a ferrous material.



SOUTH ISLAND FORMULA FORD

ROLLOVER BAR HEIGHT : The diagram says it all. The exceptions are class 3 cars that don't have a front roll hoop. They are measured to a forward substantial structure. The clearance is the same. If you are measured and found to be under 50mm, you will not race until the problem is fixed

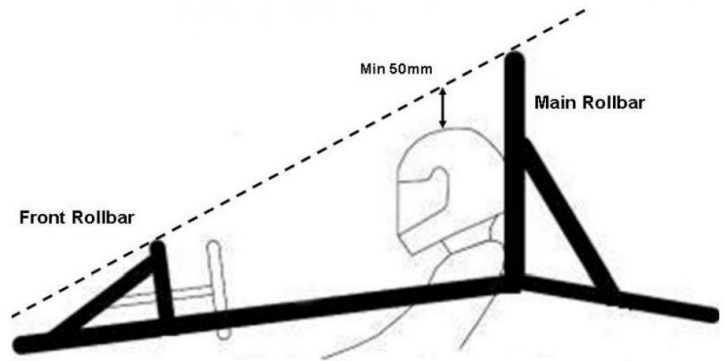
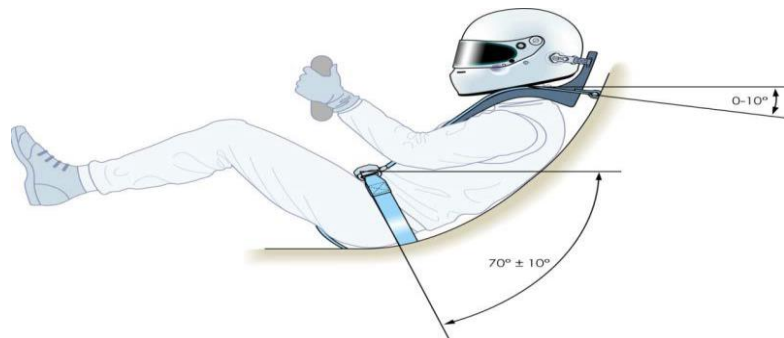


Diagram 5.1 - Open Vehicle Main Rollbar Height

SHOCK ABSORBERS : It will be a requirement for the '21-'22 season and beyond, for all dampers to have two only external adjusters. Three-ways may be modified so they comply. For further advice contact Peter McCallum for Penskes 0274 410 204 or Robert Taylor for Ohlins 021 825 514

SEAT BELTS : Are yours OK for age and height. We have, under Schedule Z, a +5yr extension to the expiry date. Safety harness shoulder straps should be installed at 0 degrees to the horizontal with angles between 0 and 10 degrees being acceptable.



DIFF CARRIER : Crack test, especially if it has had the die grinder at it. Shimmed up spider gears need a second thought as well.

REVOLUTION WHEELS : These can crack where the spokes join the rim.



SCAT RODS : Make sure these comply with Schedule F, Article 15, especially the 640g weight.

GEAR RATIOS : The chart could be used as a guideline for the Yokohamas

	Ruapuna 10.31	Levels 10.31	Ruapuna 9.31	Levels 9.31
1 st	15/36	15/36	15/36	15/36
2 nd	17/28	16/30	16/24	19/33
3 rd	20/27	17/25	23/28	19/25
4 th	24/27 or 19/21.	21/24	23/24	23/24



Info

RACE NUMBERS : Numbers are issued to drivers, not cars. The exceptions are the SIFF scholarship cars, and the NIFF HAG car, simply because of the “rental” nature of the respective arrangements. Double –ups are avoided. If you need a number, the Numbers Register is managed by Derek Wilson adw0398@yahoo.co.nz

SIM RACING : Keen to have a go ?? Contact siffsimracing@gmail.com for advice and information, or go to Facebook <https://www.facebook.com/Sif1600SimRacing>.

APPAREL : We are taking orders for a second run for “Jagger” dress shirts contact Simon Spencer-Bower simon@wanakahelicopters.co.nz or Derek: adw0398@yahoo.co.nz

CALENDAR :

SIF1600		SI Historic FF	
Ruapuna Wigram	29,30 & 31/10/21	Ruapuna	17/10/21
Levels	6/11/21		
Teretonga	4 & 5/12/21	Ruapuna	28/11/21
Speedworks	21,22,23/1/22 Ruapuna	Levels Classic	12 & 13/2/22
Levels	5/3/22		
Teretonga	19 & 20/3/22	Teretonga	19 & 20/3/22
Ruapuna	1/5/22 National Championship Super Round (TBC)		

TRANSPONDERS : We have a transponder for race weekend lease or possibly sale. Contact Andy 021 305 550, jap4x4parts@gmail.com or Derek 0275 001 735, adw0398@yahoo.co.nz

HELPERS : We have members who could do with a hand on race weekends. If you enjoy motor racing and fancy being involved with the cars and drivers, let me or Andy know.
Derek :- adw0398@yahoo.co.nz or Andy:- jap4x4parts@gmail.com

MEMBERSHIP : These are due from the 1/7/21.

A full membership (\$210) entitles the member to compete in the entire SIF1600 / SIHFF series.

A social membership (\$55) entitles a member to compete in one race meeting only.

The membership forms are available from Janine Yardley (SIFF Treasurer) treasurer@siff.co.nz

YOKOHAMAS: Email southislanddirect@gmail.com for the form as shown on the last page. Delivery will be made on receipt of payment.

SOUTH ISLAND FORMULA FORD CLUB HISTORIC SUB-COMMITTEE : Gill Cox (chairman) Steve Foster, Mark Hamilton, Hayden Cox, Nigel Barclay, Andy Robertson, Derek Wilson



CLASSIFIEDS

VAN DIEMEN STEALTH

New belts, new nose cone, 2 spare radiators, 3 sets rims
Ratios for all tracks except Hampton Downs
Unused spare suspension arms, comprehensive spares
Rebuilt Ohlins 2-way (front) , \$1721, invoice provided
Ohlins on the rear. Car is race ready
Contact Kerry Ross 021 605 360



VAN DIEMEN RF77

Excellent condition, new master cylinders, overhauled
brake calipers, new pads, gauges, carb, water pump.
Fresh +40 championship engine
New Avon ACB9 tyres
COD Historic listed
\$26,000
Contact : Royce 0275 161 509
email : royce.bayer@xtra.co.nz



VAN DIEMEN RF83

Spares include nosecone, brake and engine parts,
suspension, quick lift jack, spare set of wheels
Tidy and reliable
\$23,000
Contact : Nigel Barclay 021 490 907
email nigel@pennyhomes.co.nz



VAN DIEMEN RF91

A front to back eighteen month restoration
Beautifully finished. A must see.
New Yokohamas
\$36,000
Contact John Sloane 0274 519 994



SOUTH ISLAND FORMULA FORD

RAY GR21 Motorsport Solutions has secured an arrangement to import new GR21 Rays in kitset form, and is seeking expressions of interest. The kits are imported minus the motor, and are VERY attractively priced. Spares availability has also been arranged, again at attractive prices. Lead-in times of 16 weeks can be expected; order asap for on time delivery.

Contact : John Crawford at Motorsport Solutions
Ph 03 349 3600



TrackTec Racing accelerate to the podium program has a Ray GR20 available for racing and testing , testing on the new tyre will start as soon as we get the Yokohama tyres into New Zealand ,exciting times for all as the playing field will levelled out with the introduction of these tyres

For further info contact

matt.tracktecracing@gmail.com



MYGALE SJ07

Podium winning car, as raced by Kaleb Ngtoa
New Hartley engine Lots of spares, eg. wishbones, shock springs, full gear sets wheels and tyres, nose cone, side pods. Please call for full list
\$55, 0000 including all spares, ready to race
Gantry and stands at additional cost

Contact Robbie on 021 163 6399



SOUTH ISLAND FORMULA FORD



JOHNSTON-HUSTLER 02-07 (1973)

Sound mechanically but needs a tidy up.

Spare suspension and wheels.

Spare nose and top body half plus molds for both.

\$20,000

Contact Phil Reed : 0272 088 633

Email : philreed@hotmail.com



BOWIN P6F 1973

1973-74 National Championship winning car (Peter Hughes)

1999-2000 National Championship winning car class 3

2013-14 National Championship winner class 3 (Royce Bayer)

Very tidy car

\$24,000

Contact Phil Reed : 0272 088 633

Email : philreed@hotmail.com



The owner won't be racing himself and is keen to see these two cars out on the track.

VAN DIEMEN '91, '92 SIDE WINDOWS.

Hardened Acrylic and supplied with plastic pop rivets to prevent cracking. Some finishing will be required to suit individual cars. Good luck finding these anywhere else. One order already from the UK .

\$130 / pair incl GST plus postage

Contact: John Sloane 0274 519 994

Email : sloanedogon@xtra.co.nz



SOUTH ISLAND FORMULA FORD



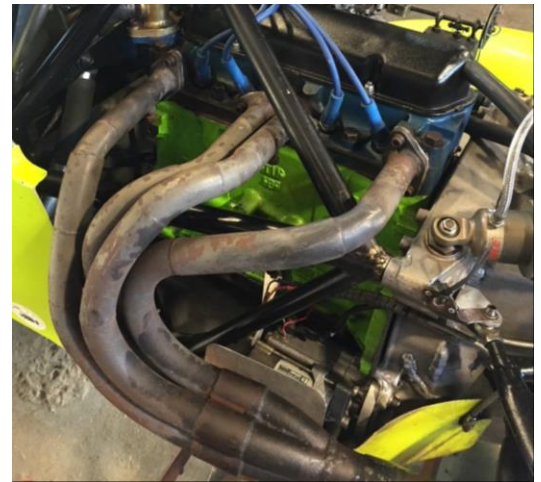
LOW PIPE 4 into 1 exhaust system to suit '90 – 92 VD

Available ex Christchurch

\$200

Contact Shane 0274 739 406

Email ceo@cichane.co.nz



Chicane Racewear are now the NZ distributor for the high quality Radial rod ends and spherical bearings. Previously distributed by BRM Trading, the USA made rod ends start with the chrome moly high strength precision series then move to the stainless steel high strength aerospace series, both with heavy duty shank options.

Contact us now on 0800 CHICANE or go to www.racerodends.com for more info



HEWLAND LD200

STANDARD DIFF CARRIERS

2 x flat
1 x dished

\$870 + GST invoice provided

Contact Kim Crocker 0274 788 026

Email kim.crocker@xtra.co.nz





Radars Motorsport



Performance Engine Builder



For all of your engine requirements including carburettor and distributor repairs

House calls also available for any of those car issues that you just need a little help with

I am always available to help by phone /text or email

30 years' experience in performance engine building

20 years' experience in Formula ford

Ian Mckeown

021 641 681 ijmck@orcon.net.nz

HEWLAND MK9 Gear ratios : I am looking for the following gear ratios to purchase or swap. I have some double ups

15-36 (First, either hubbed or non-hubbed)

17-33

19-33

21-29

CONTACT Grant Campbell 021 637 610 or grant_a@hotmail.co.nz

CAR STARTING TO JUMP OUT OF GEAR? Rebuilding those worn dog rings and gears is a very economical option to buying new. Further enquiries to Justin Neill Engineering

Ph 03 323 9900 Mob 027 228 0050

Email justinneill@xtra.co.nz

10 Langston Lane, Papanui, Christchurch



SOUTH ISLAND FORMULA FORD



SEAT MOLD to suit Van Diemen RF90-92. Anyone wanting to make their own seat is welcome to borrow this mold. ALSO if anyone has any internals for a Mk5 Hewland, John Sloane would be very interested. Contact him on 0274 519 994



NON-RETURN VALVES. These are a mandatory safety item to be fitted to the breather from the fuel tank.

Proceeds go to the SIFF club. \$20.00 ea
Contact Andy Robertson : 021 305 550



CORNER WEIGHTING MACHINE.

A common option before electronic scales

Slower than the modern ones, 10% of the price though !

\$280

Contact Clive Kirkland 0274 338 619

Email kirkland-electrical@xtra.co.nz



100mm x 100mm 12 volt 36 LED Rain Light. Exactly the same as fitted to Andy Downs' car. Very good lights that easily exceed MSNZ requirements, and look at the price.....\$61.00 incl

Phone Hornby Auto Electrical : 03 344 0170 or Malcolm : 0274 315 170



SOUTH ISLAND FORMULA FORD

AVAILABLE from MOTORSPORT SOLUTIONS

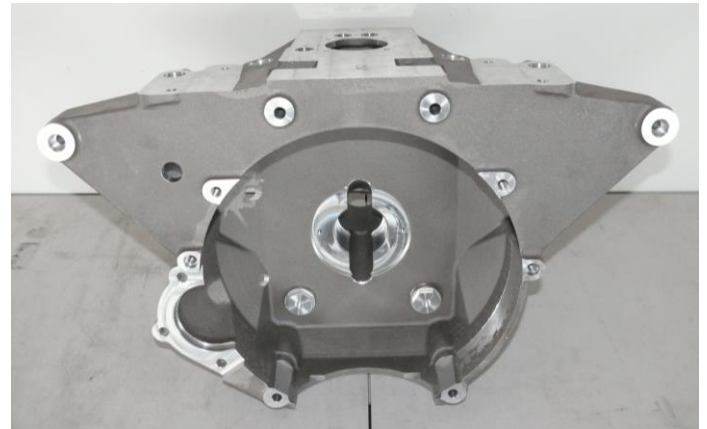


Ivey Valves Formula Ford -
Intake \$29 + GST
Exhaust \$39 + GST

Rebel rims in stock
\$425 + GST



Lola 644 front uprights LH & RH
\$850 + GST ea.



Stealth bellhousing suitS both SWB , LWB. POA

To keep up to date on our latest products, visit – www.motorsportsolutions.co.nz

Email: motorsportsolutions@xtra.co.nz

Phone: 03 349 3600



Small carbon-look mirrors, \$89.10, as per <https://www.classiccaraccessories.co.nz/collections/mirrors/products/carbon-look-racing-mirrors> – Small black mirrors, \$76.50 as per <https://www.classiccaraccessories.co.nz/collections/mirrors/products/black-lightweight-racing-mirrors> - Small carbon mirrors, \$202.50 as per <https://www.classiccaraccessories.co.nz/collections/mirrors/products/carbon-fibre-racing-mirrors> Discount prices for SIFF members



For the discounted price please use the following link: www.classiccaraccessories.co.nz/formulaford



SOUTH ISLAND FORMULA FORD



.A piece of advice from Malcolm Yardley. On these distributors the cover over the module can short out. Insulation should be fitted in the side cover. The terminals should also be insulated and possibly bent over.

phone Malcolm 0274 315 170

For further advice



DUNLOP CR82 TYRES, available direct from Dunlop Motorsport

Made in Europe \$990 incl.GST

FREIGHT FREE to any town for a set of four

CONTACT Richard Fraser Dunlop Motorsport Manager

Goodyear and Dunlop tyres

04 528 8015 mob. 0272 795 101

Email richardfraser@goodyear.com



STEALTH NOSECONE .

The pointy version as developed by the Leitches and used by James Penrose to win the SIF1600 and National Championships . The margin on sales goes to the SIFF club.

\$170.00 each

Contact Andy Robertson : 021 305 550



SOUTH ISLAND FORMULA FORD

Latest arriving, 2021 Formula Harness with either pull up or pull down side straps, quick release adjuster only available in Black \$345 plus gst



WWW.PALMSIDE.CO.NZ

4 Islington Avenue Christchurch 8042 phone 03 338 9151

HEAD

Cast Steel Formula Ford head
Complete with valves , rockers etc
as shown.
Being replaced with an alloy head.

\$2700
Contact Gary Love
0274 077 879



SOUTH ISLAND FORMULA FORD



VELOCITY HQ RACE CAR TRAILERS

Tilt bed, unladen weight = 980kg, gross = 3000kg
internal length 4.86m, width at wheel arch 2.09m
height 1.83m

Many other options including a 2 car system that works particularly well for F1600s

<https://www.trademe.co.nz/a/motors/trailers/tandem-axle/listing/3027769951?bof=WzVaqbH9>

Link to Two car system option

<https://www.facebook.com/watch/?v=849668015419795>

\$29,999

Contact Adam Julian 021 304 001

decracing@outlook.com



CLASS 3 / HISTORIC UPRIGHTS

Suit early Johnston and other older cars

Complete with steering arms

\$300 per pair

Contact Clive 0274 338 619

Email kirkland-electrical@xtra.co.nz

UK REVOLUTION RACE WHEELS

2 sets as used on the ex Noble-Adams VD90

Very good condition



SOUTH ISLAND FORMULA FORD



\$600 per set

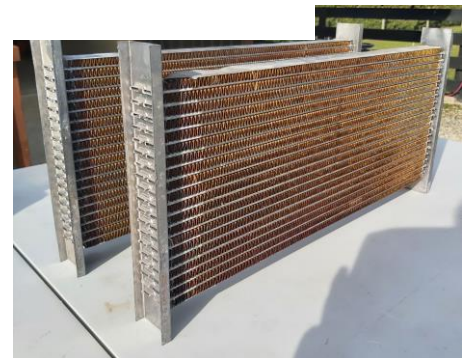
Contact Nigel Arkell 029 993 3007

narkell@mac.com



Van Diemen 90-92 Parts For Sale

Top Front Wishbones x2 Standard Suspension NEW - \$250 Each
Right Front Lower Wishbone Standard Suspension NEW - \$290
Rear Top Wishbone NEW - \$280
1 Pair Springs 8inch x 150lbs (UK) NEW - \$180
1 Pair Springs 8inch x 160lbs (UK) NEW - \$180
2x Radiator Cores NEW \$300



Gear Ratios/Parts For Sale

- Hewland Mk 8/9 Gear Ratios 20:32 NEW \$450
- Hewland Mk 8/9 Gear Ratios 20:31 NEW \$450
- Input Shaft For 8" Clutch (Hewland HC23917) NEW \$450

Gear Ratios/Parts For Sale

- LD200 20:32 NEW \$450
- LD200 21:27 NEW \$450
- LD200 21:26 AS NEW \$400
- LD200 19:25 AS NEW \$400
- LD200 24:28 AS NEW \$400
- LD200 First Gear and Shaft 14:36 VERY GOOD CONDITION \$750

Cortina 1600GT 2737E head. New valve guides \$300

FOR ALL OF THE ABOVE Contact Bob 0210 236 5086
email: greenpear225@gmail.com



please note OTHER PARTS ALSO AVAILABLE



SOUTH ISLAND FORMULA FORD

QA1 DAMPERS

Rear eye to eye 270mm
Front eye to eye 255mm
Will fit Ray
One way adjustment
Alloy body
Dyno sheet to go with dampers

\$1000 for the set

Contact Ryan 0273 600 218

Email info@ryanselectrical.co.nz



WELLER STEEL WHEELS

A total of 18

Ryan Low = 12

Gary Love = 6

Offset +10
PCD 95.25

\$100 each



SOUTH ISLAND FORMULA FORD

Contact Ryan 0273 600 218 email info@ryanselectrical.co.nz

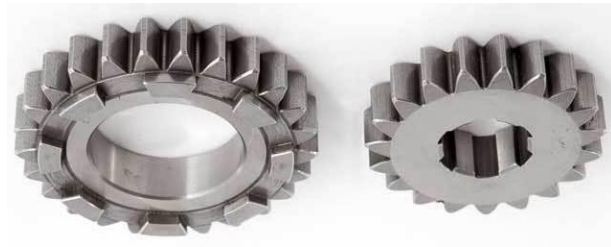


Brand new Cambridge Dynamics LD200 gear ratios as listed below. Be quick at this awesome price, \$345 each incl GST plus freight ex Auckland.

Contact Shane @ Chicane Racewear on 0800 CHICANE or ceo@chicane.co.nz

RATIO TEETH Stock

- 2.5714 14X36 1
- 1.9375 16X31 1
- 2.1250 16X34 3
- 2.1875 16X35 1
- 1.8130 16X29 1
- 1.5550 18X28 2
- 1.7780 18X32 1
- 1.8880 18X34 1
- 1.2630 19X24 1
- 1.4210 19X27 4
- 1.5500 20X31 4
- 1.2380 21X26 3
- 1.2730 22X28 1
- 1.2170 23X28 1
- 1.2600 23X29 4
- 1.0000 24X24 2



Virtual Race Training

CARLYLE
PERFORMANCE LIMITED

ACTUAL RESULTS

MOTIONFORCE1
PERFORMANCE SIMULATIONS

Carlyle-Performance-Ltd
0292 632223



SOUTH ISLAND FORMULA FORD 

siff.co.nz

Tyre Order and Costs

Name _____

Contact Phone Number _____

Tyre Order (please tick) One Set \$ 989.00 Two Sets \$1978.00 One Tyre Only \$247.25

Note – maximum initial order limited to two sets of tyres

Delivery Address _____

Note – delivery can only be made to a commercial address

Tyre Payment Method – Online Only

1. Please scan or take a digital image of completed forms Send to southislanddirect@gmail.com
2. Use your name and type "Tyres" as references A/C No **03 0830 0098465 000**

Please note – this bank account differs from the account used for membership payments